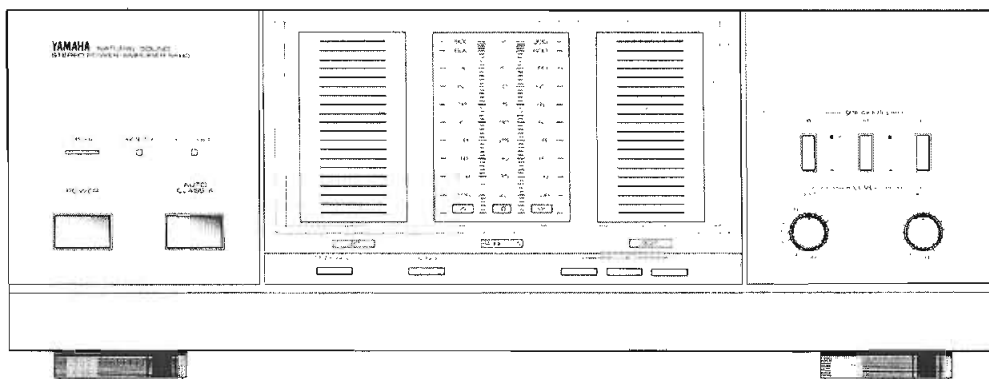


STEREO POWER AMPLIFIER M-80

SERVICE MANUAL



■ TO SERVICE PERSONNEL

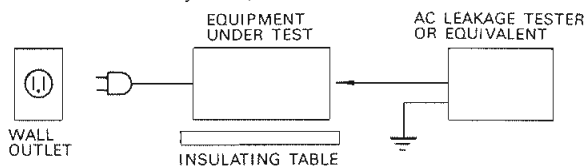
1. Critical Components Information.

Components having special characteristics are marked Δ and must be replaced with parts having specifications equal to those originally installed.

2. Leakage Current Measurement (For 120V Model Only).

When service has been completed, it is imperative that you verify that all exposed conductive surfaces are properly insulated from supply circuits.

- Meter impedance should be equivalent to 1500 ohm shunted by 0.15 μ F.
- Leakage current must not exceed 0.5mA.
- Be sure to test for leakage with AC plug in both polarities.



■ CONTENTS

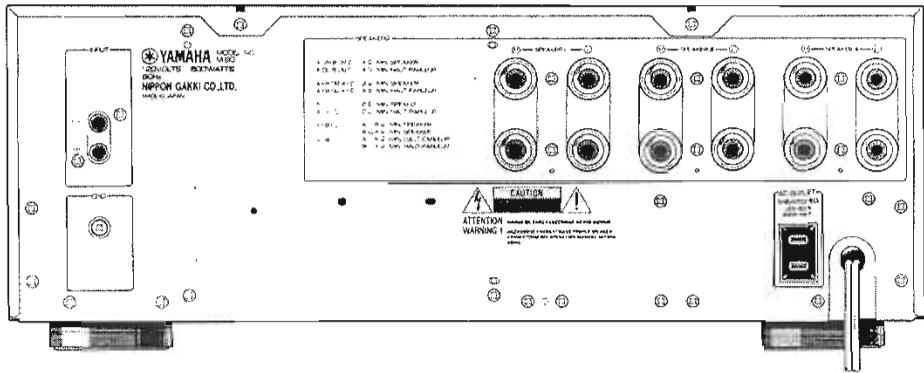
REAR PANEL	1	P.C. BOARD ~ POWER SUPPLY	7
BLOCK DIAGRAM	2	SCHEMATIC DIAGRAM ~ MAIN	8
SPECIFICATIONS	2	SCHEMATIC DIAGRAM ~ METER	9
DISASSEMBLY PROCEDURE	3	WIRING DIAGRAM	9
INTERNAL VIEW	4	PARTS LIST ~ ELECTRIC	10
ADJUSTMENTS	4	EXPLODED VIEW ~ MECHANISM/CHASSIS	14
P.C. BOARD ~ METER	5	PARTS LIST ~ MECHANISM/CHASSIS	16
P.C. BOARD ~ MAIN	6		



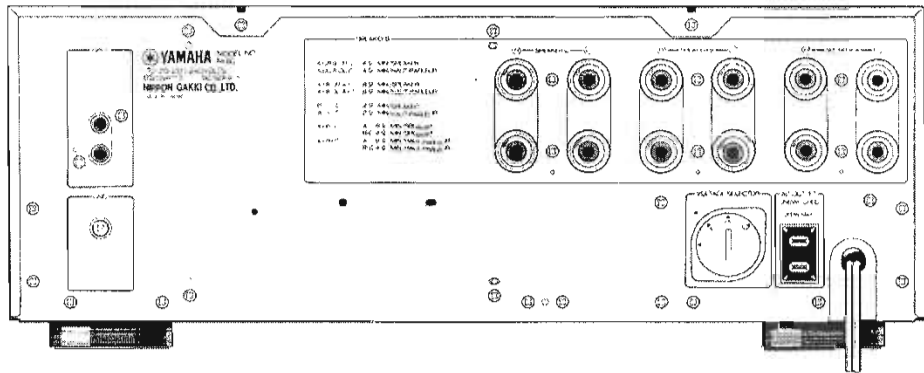
M-80

REAR PANEL

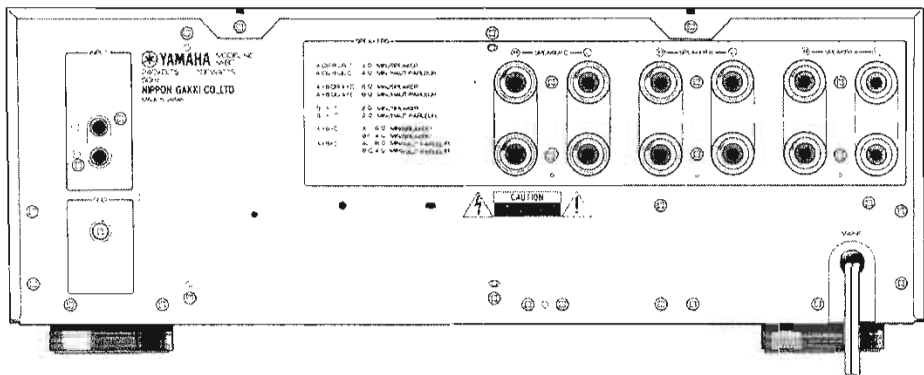
U.S.A. and Canadian Models



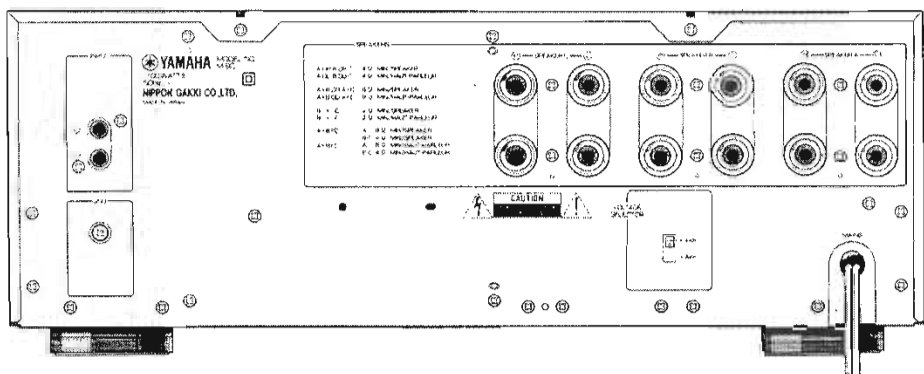
General Model



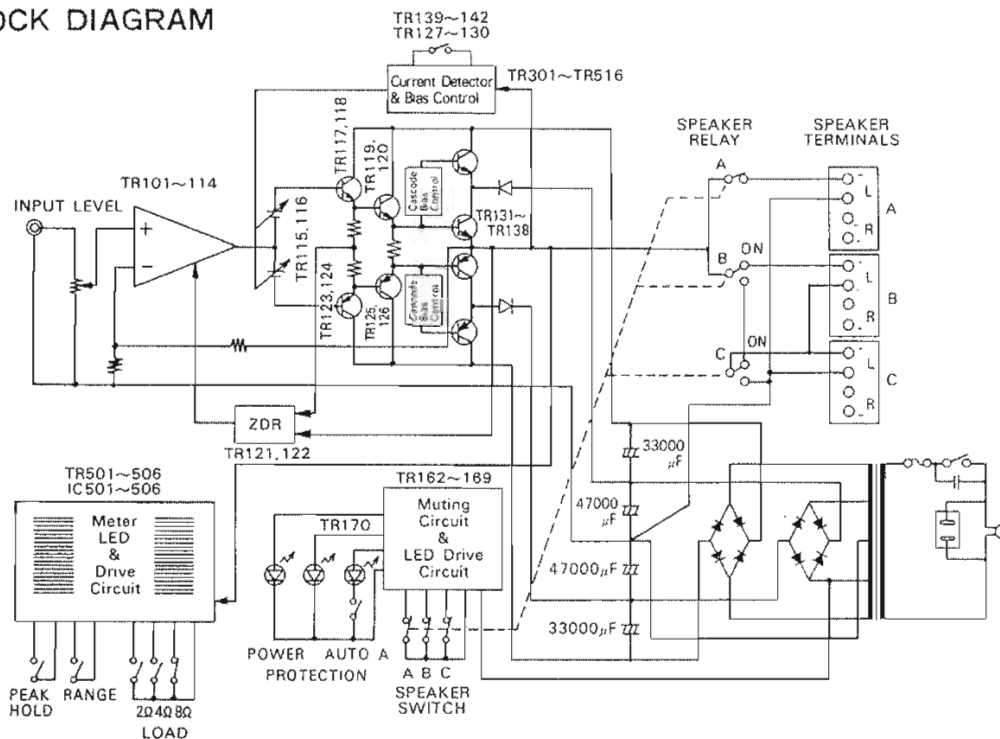
Australian Model



European Model



■ BLOCK DIAGRAM



■ SPECIFICATIONS

Continuous Power Per Channel

20Hz~20KHz

(0.003% THD 8Ω).....250W

(class A 30W)

(0.007% THD 6Ω).....290W

(0.02% THD 4Ω).....330W(U.C), 340W(R.A.E)

Dynamic Power

1KHz 8Ω/6Ω/4Ω/2Ω.....380W/480W/640W/850W

DIN Standard Output Power Per Channel

1KHz 1%/10% THD 4Ω.....450W/500W

IEC Power

0.01% 1KHz 8Ω/6Ω/4Ω.....265W/350W/440W

Total Harmonic Distortion

Main in to Sp out 125W/8Ω.....0.002%

Power Band Width

0.03% THD 125W(8Ω).....10Hz~100KHz

Damping Factor

Speaker A 1KHz 8Ω.....250

Input Sensitivity/Impedance

1.55V/20kΩ

Frequency Response

20Hz~20KHz.....+0, -0.1dB

Intermodulation Distortion

8Ω.....0.003%

Signal to Noise Ratio (IHF-A-Network)

(Shorted /5.1kΩ).....127dB/119dB

Residual Noise (IHF-A-Network).....16μV

Channel Separation (Input Shorted)

40Hz.....106dB

1 KHz.....89dB

10KHz.....76dB

Power Supply

AC120V·60Hz(U.C)

AC110/120V, 220/240V·50/60Hz(R)

AC220/240V·50Hz(E)

AC240V·50Hz(A)

Power Consumption

600W(U), 1100W·1300VA(C), 850W(R),

1700W(A.E)

AC Output (R.U.C)

200W max

Dimensions

(W × H × D).....435 × 165 × 425mm (7-1/8" × 6-1/2" × 16-3/4")

Weight

23k (50lbs·10oz)

Specifications subject to change without notice

U : USA Model

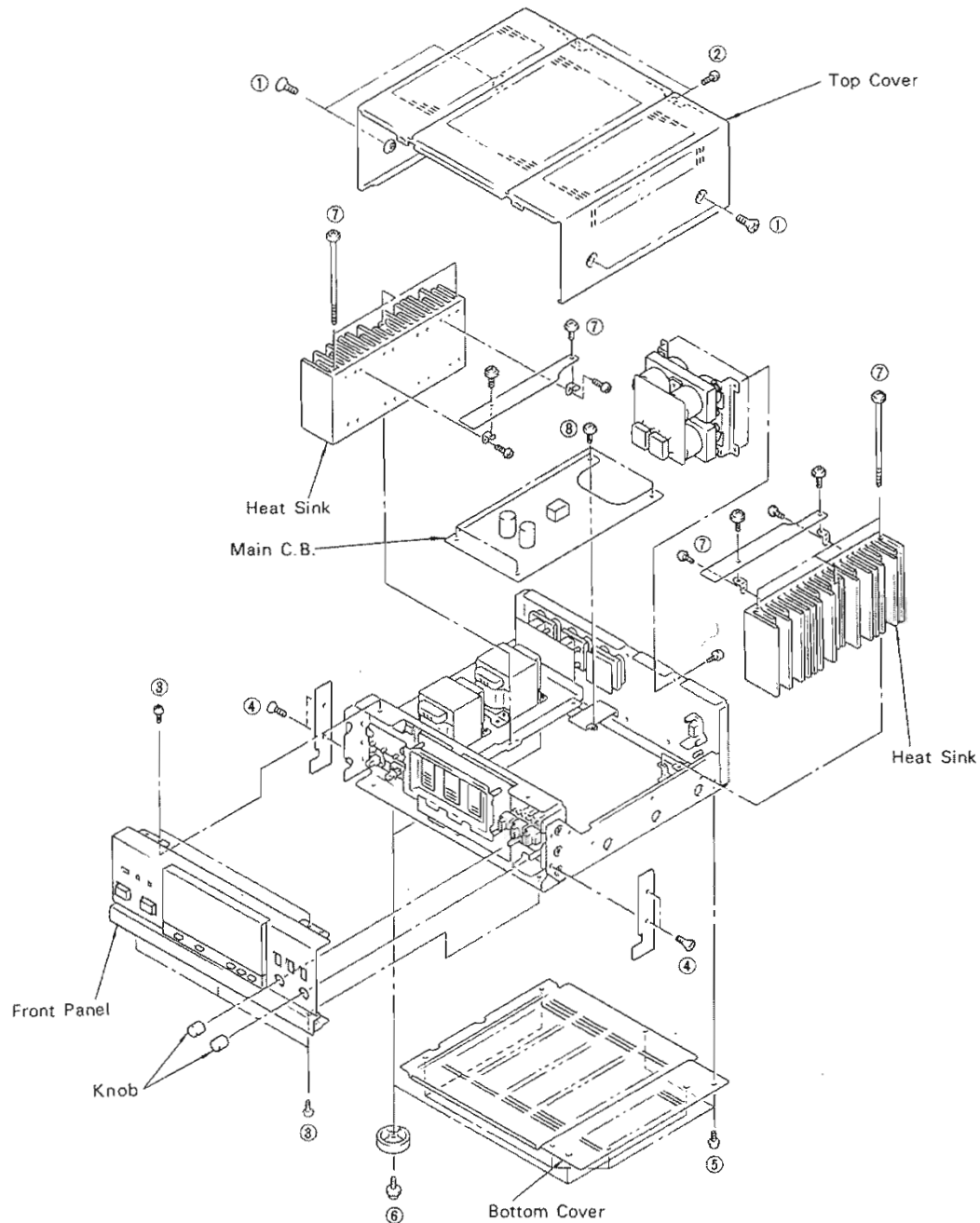
C : Canadian Model

R : General Model

A : Australian Model

E : European Model

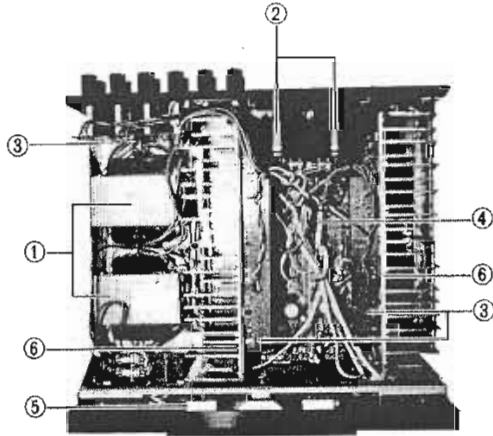
DISASSEMBLY PROCEDURE



Remove parts in the following order.

1. Remove the top cover by removing screws ① (×4) and screws ② (×2).
2. Remove the front panel by removing screws ③ (×5).
3. Remove the bottom cover by removing screws ⑤ (×6) and screws ⑥ (×4).
4. Remove the heat sink by removing screws ⑦ (×6).
5. Remove the main circuit board by removing screws ⑧ (×4).

INTERNAL VIEW



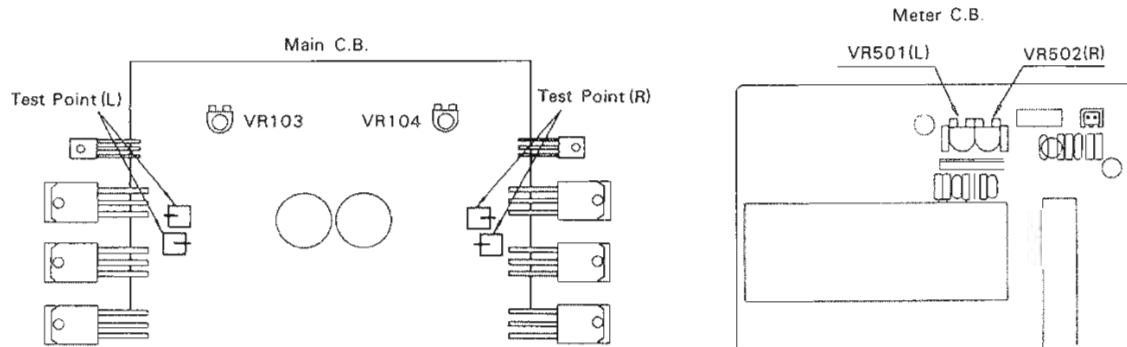
- ① Power Transformer
- ② Electrolytic Cap
- ③ Power Supply P.C.B.
- ④ Main P.C.B.
- ⑤ Meter P.C.B.
- ⑥ Heat Sink

ADJUSTMENTS

Before Adjustments

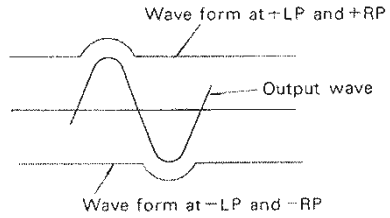
- Wait 2 minutes after power-on to stabilize amplifier operation without signal.
- Make sure that the main volume is minimum and set Auto-A switch to OFF.

Step	Adjustments	Location	Test Equipment	Test point	Value
1	Idling adjustment	VR103(L-ch.) VR104(R-ch.)	D.C. V-meter Digital tester	Across emitter resistor(0.22Ω) of power transistor. R153,R155(L-ch.) R154,R156(R-ch.)	10.0±1mV
2	Auto-A operation confirmation	Check that the voltage at each test point stated above increases when Auto-A switch is turned on.			130±13mV
3	Meter Level adjustment	VR501(L-ch.) VR502(R-ch.)	(1) Set the load level of the meter at 2Ω position. (2) Adjust VR501 and VR502 so that 0dB of the meter lights up when the output is f=1KHz and V=34.5V with NO LOAD.		



M-80

- Confirmation of the voltage switching operation.
 Terminals output : $f=1\text{KHz}$ 100W (load is 8Ω).
 Check that the wave form at $\pm\text{LP}$ and $\pm\text{RP}$
 terminals changes as shown right.



A

B

C

D

■ PRINTED CIRCUIT BOARD PATTERN SIDE ~ METER CIRCUIT BOARD

1

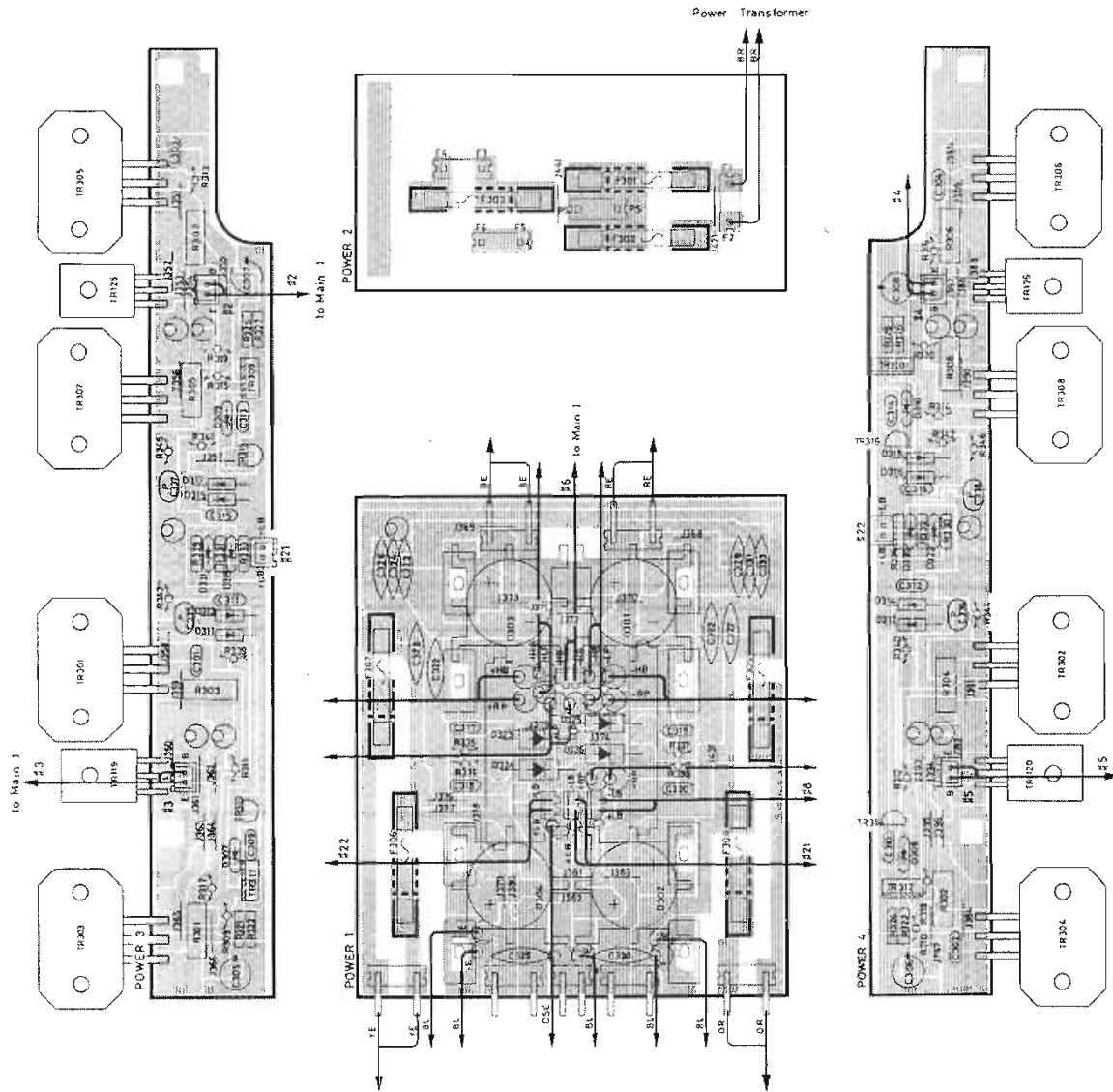
2

3

4

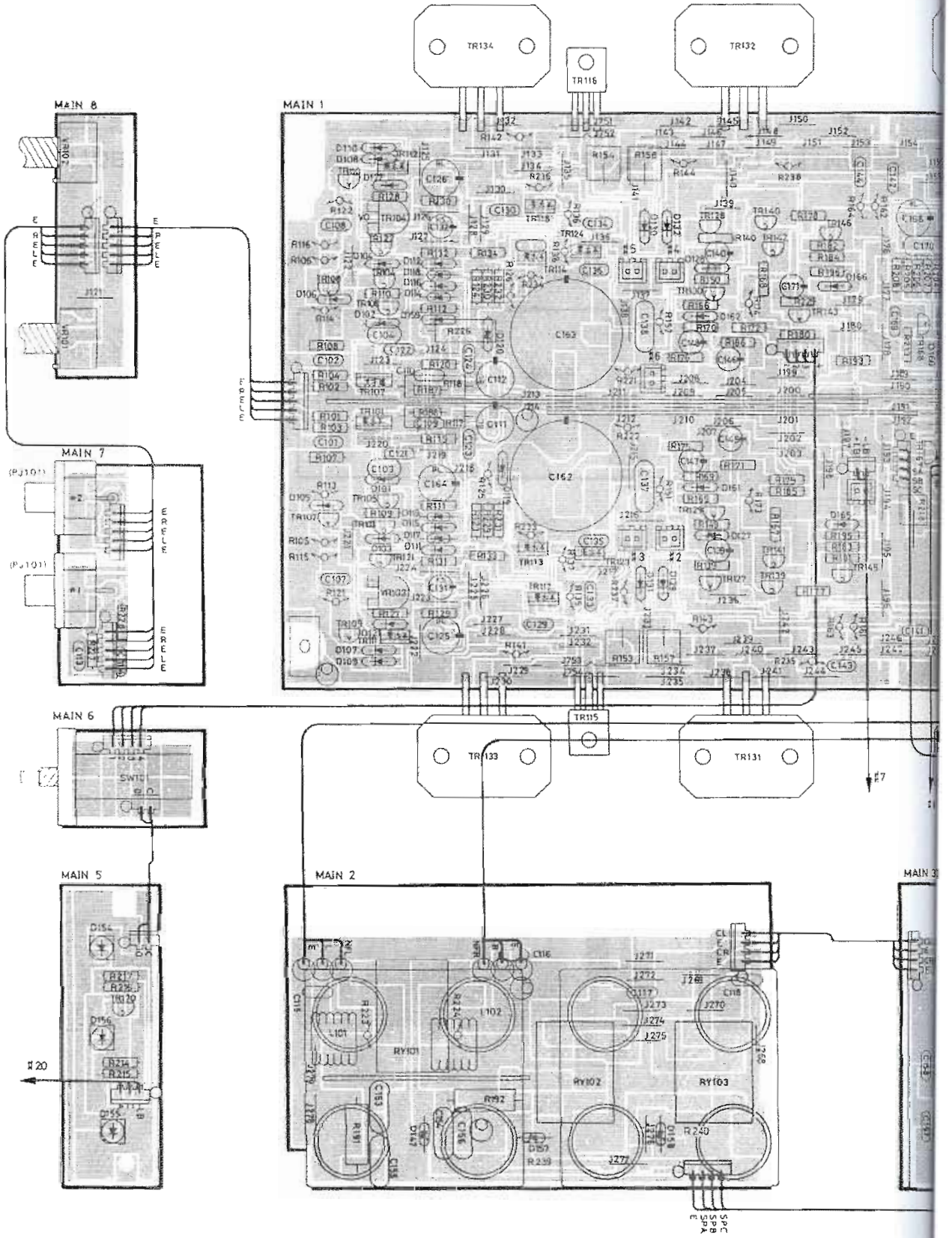
5

6

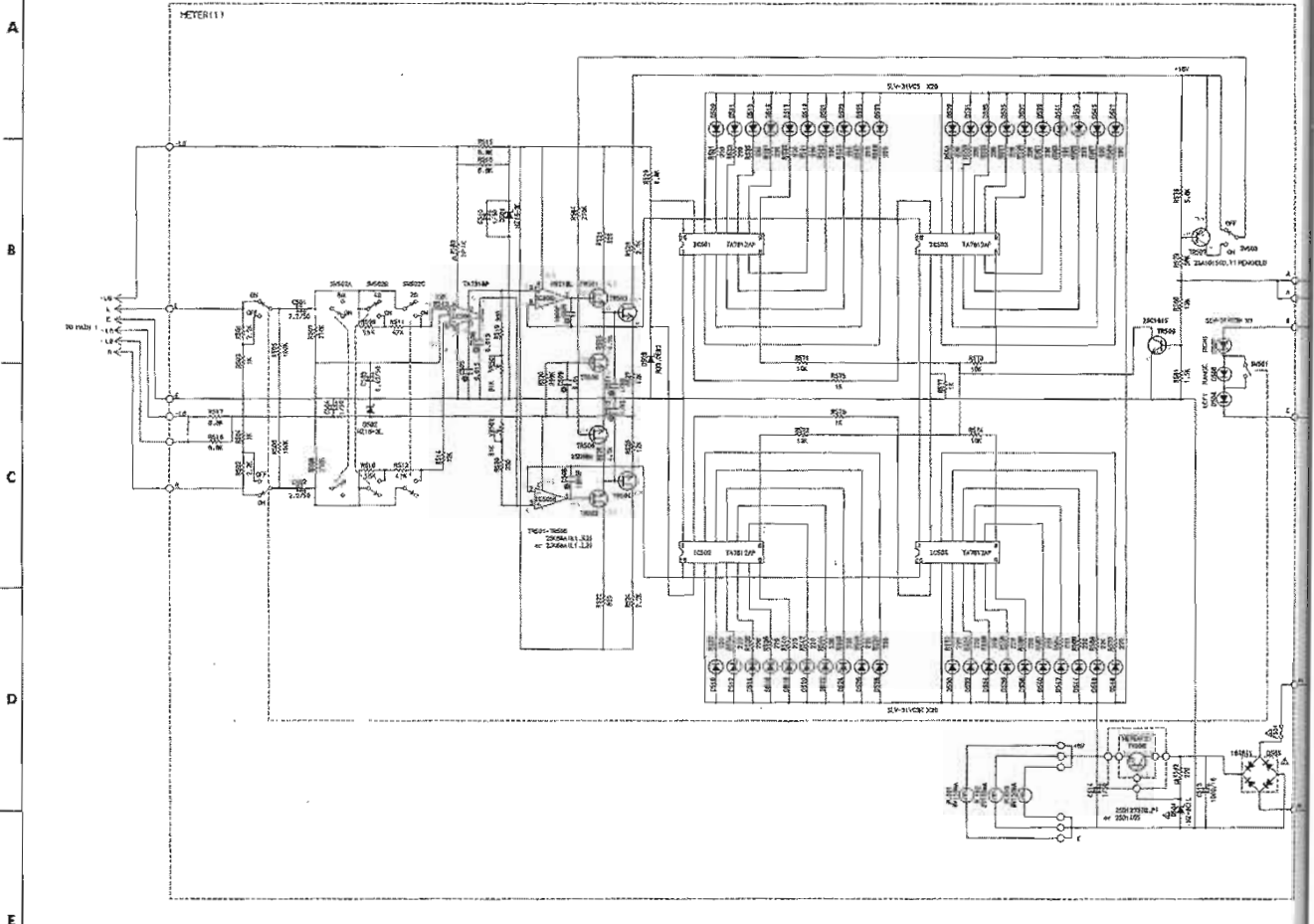


PRINTED CIRCUIT BOARD PATTERN SIDE ~ MAIN CIRCUIT BOARD/METER

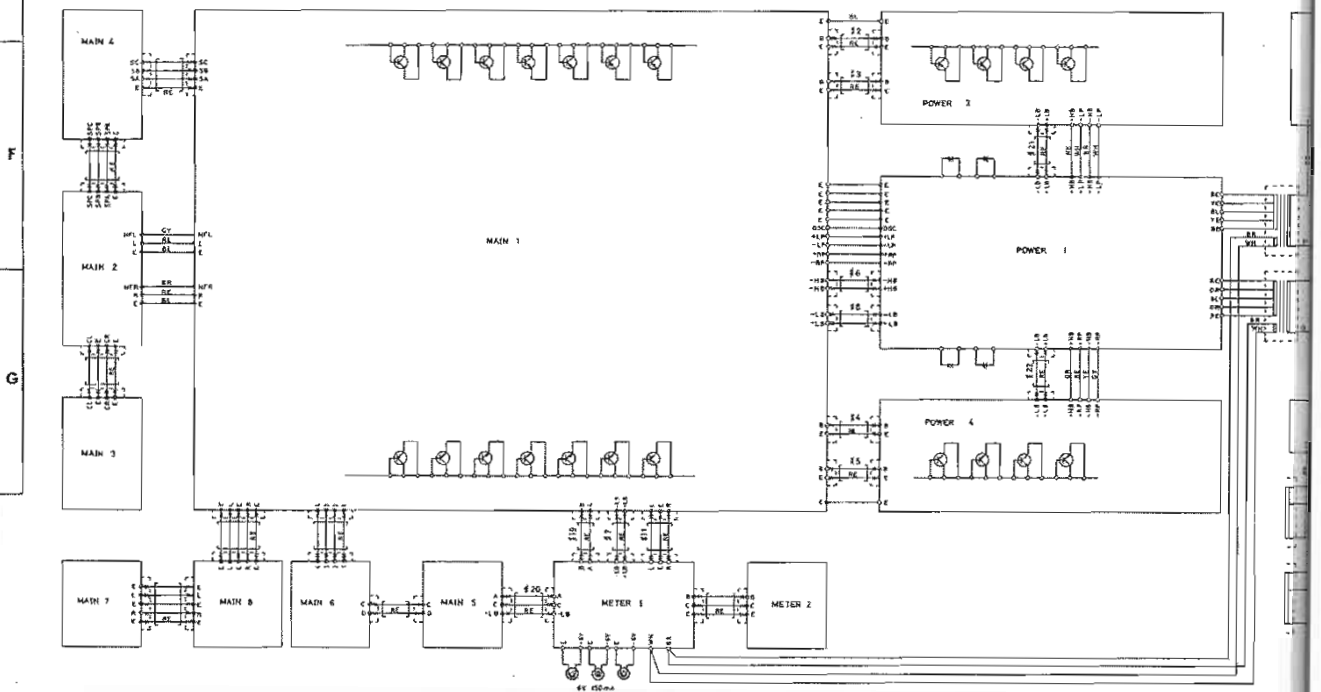
1
2
3
4
5
6
6

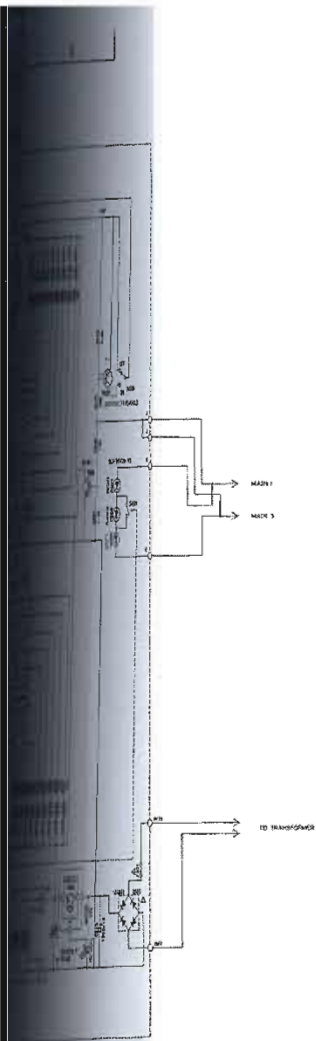


■総合回路図(SCHEMATIC DIAGRAM~METER)




■結線図(WIRING DIAGRAM)



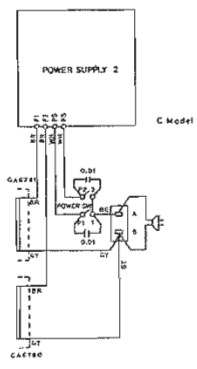
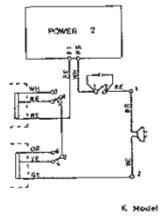
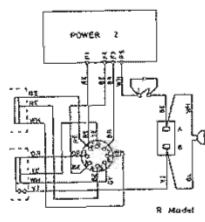
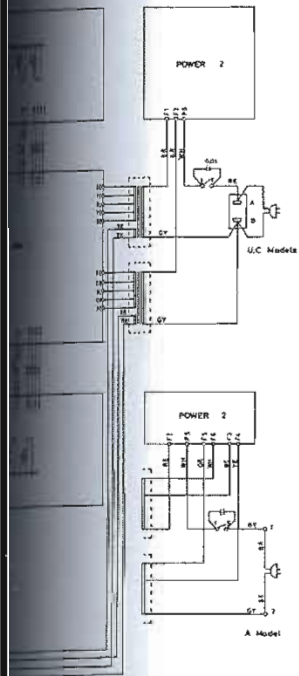


	B, D, E	A, A
FUSE	2-AMP	2-AMP

Symbols  on the Meter pcb. indicate FAST OPERATING FUSE. Replace with same type fuse when servicing.

WIRE COLOR ABBREVIATIONS

- RE : RED
- WH : WHITE
- BL : BLUE
- BR : BROWN
- BLK : BLACK
- YE : YELLOW
- OR : ORANGE
- GY : GRAY
- GRN : GREEN
- VI : VIOLET



■WARNING

Components having special characteristics are marked Δ and must be replaced with parts having specifications equal to those originally installed

●Carbon resistors of this amplifier are 1/4W
There is no description about them in this parts list
Use the "Part No." HJ35○○○○ or equivalent

■PARTS LIST~ELECTRICITY

Ref. No.	Part No.	Description	部 品 名	Remarks	Common Model	Markets	ランク
※	NA 08 46 10	Main Circuit Board	メ イ ン シ ー ト			U,R,A,C	
※	NA 08 49 50	"	"			E	
	UT 45 41 00	Polipropylene Film Cap	ポ リ プ ロ コ ン	C157,158		E	
	FC 36 31 00	Mylar Cap	マ イ ラ ー コ ン	C169			
	FC 36 31 50	"	"	C107,108			
	FC 36 44 70	"	"	C149~152,165			
	FA 15 46 80	"	"	C153~156			
※	UT 45 23 90	Polipropylene Film Cap	ポ リ プ ロ コ ン	C113,114		E	
	UT 45 21 50	"	"	C133,134			
	UT 45 24 70	"	"	C101,102			
	UT 45 41 00	"	"	C141~144			
	UT 46 32 70	"	"	C115~120		E	
	FU 35 05 00	FE Mica Cap	F E マ イ カ コ ン	C109,110			
	FU 35 14 70	"	"	C129,130,135,136			
	FU 35 11 80	"	"	C121,122			
	FU 35 13 90	"	"	C123,124			
	UA 25 52 20	Mylar Capacitor	マ イ ラ ー コ ン	C105			
※	FZ 00 54 10	Electrolytic Cap	ケ ミ コ ン	C125,126,168			
※	FZ 00 61 30	"	"	C111,112			
※	FZ 00 61 40	"	"	C164			
	FZ 00 55 80	Mylar Cap	銅リードマイラーコン	C103,104			
	FZ 00 49 40	"	"	C137,138,170			
	UW 96 71 00	Electrolytic Cap	ケ ミ コ ン	C171			
	UW 95 71 00	"	"	C166,167			
	UW 95 74 70	"	"	C145~148			
	UW 96 54 70	"	"	C139,140			
	UM 07 71 00	"	"	C131,132			
※	FZ 00 59 70	"	"	C162,163			
	GD 90 03 70	Coil	コ イ ル	L101,102			
	HL 32 71 20	Metal Oxide Resistor	酸 金 抵 抗	R117,118			
	HL 32 32 20	"	"	R191,192			
	HL 32 41 00	"	"	R189,190			
※	HL 32 63 90	"	"	R226			
	HU 57 54 30	Metal Film Resistor	金 属 被 膜 抵 抗	R187,188			
	HM 55 53 90	Cement Moulded Resistor	セメントテイクウ	R218~220			
	HZ 00 44 70	"	"	R153~160			Δ
	HV 45 62 70	Flame Proof Resistor	不 燃 化 カ ー ボ ン	R181,182			
	HV 45 32 20	"	"	R141~148,235~238			Δ
	HV 45 34 70	"	"	R161~164			
	HV 45 41 00	"	"	R223,224			
	HV 45 42 20	"	"	R221,222			Δ
	HV 45 45 60	"	"	R115,116			
	HV 45 46 80	"	"	R121,122			Δ
	HV 45 51 00	"	"	R151,152			
	HV 45 52 20	"	"	R105,106,113,114			Δ
	HV 45 53 30	"	"	R125,126			
	HV 45 54 70	"	"	R233,234			
	HV 45 61 00	"	"	R135~138			
	HV 45 62 20	"	"	R173,174			Δ
	HV 45 66 80	"	"	R177,178			

※New Parts (新規部品)

Ref. No.	Part No.	Description	部 品 名	Remarks	Common Model	Markets	ランク	
※	HS 41 23 50	VR	20KA	V R 16 型	VR101,102			
	HT 37 00 10	Semi Variable Resistor	81kΩ EVN-52J	半 固 定 V R	VR103,104	} Interchangeable		
	HT 77 00 30	"	81kΩ KVSF8-7PNFX	"	"			
	iA 09 70 00	Transistor	2SA970 GR,BL	ト ラ ン ジ ス タ	TR143			
	iA 10 15 70	"	2SA1015 φ,Y	"	TR107~110		△	
	iA 11 15 10	"	2SA1115 E,F	"	TR127~130, 165,166	} Interchangeable		
	iA 11 27 00	"	2SA1127 R,S,T	"	"			
	iA 13 52 00	"	2SA1352	"	TR111,112,123,124		△	
	iB 05 60 00	"	2SA560 E,F	"	TR167,169			
	iC 22 40 00	"	2SC2240 GR,BL	"	TR103~106,121, 122,145,146	} Interchangeable		
	iC 26 03 10	"	2SC2603 E,F	"	TR139~142, 162~164,168,170			△
	iC 26 34 00	"	2SC2634 R,S,T	"	"			△
※	iC 34 16 00	"	2SC3416	"	TR113,114,117,118		△	
	iE 10 45 00	Dual FET	2SK389 GR,BL	デュアル F E T	TR101,102			
	iF 00 00 40	Diode	1S1555	ダ イ オ ー ド	D103~112,116, 116,121,122,146	} Interchangeable		
	iF 00 06 70	"	1S2473	"	"			
	iF 00 14 00	"	1SS82	"	D129~132,161, 162,165,166,160			
	iF 00 15 10	Zener Diode	HZ-6C1L	ツェナーダイオード	D101,102,127,128			
	iF 00 18 40	"	RD3,0EB2	"	D119,120			
	iF 00 20 80	"	HZ16-3L	"	D159,164		△	
	iF 00 19 40	"	HZ24-2	"	D147,157,158			
	iF 00 44 40	LED (Red)	SLV-56URC3H	L E D (赤) フック付き	D154~156			
	iF 00 64 70	Zener Diode	MTZ7.5B	ツェナーダイオード	D113,114,117,118	} Interchangeable		
	iF 00 68 20	"	MA1075-M	"	"			
※	iF 00 80 30	"	MTZ75C	"	"			
	KA 80 40 70	Push Switch	NS4-2	ブ ッ シ ュ S W	SW101			
※	KA 80 46 60	"	SUN2-2 3連	"	SW102			
※	KC 00 14 10	Relay	DC24V JC2a	リレー(マグネット付き)	RY101			
※	KC 00 19 20	"	DC24V MS4U	"	RY102,103			
	LB 20 19 50	Pin Jack 2P	金メッキ	2 P ピンジャック	PJ101			
	BB 07 04 10	Bus BAR	L=55					
	BB 07 04 20	"	L=100					
	BB 07 04 30	"	L=145					
	BB 06 83 70	Earth Metal						
※	LA 00 53 20	SP Terminal		S P タ ー ミ ナ ル				
※	LA 00 53 40	"	4P	"		R,U,A,C		
※	LA 00 53 70	"	4P	"		E		
※	NA 08 44 90	Meter Circuit Board		メ ー タ ー シ ー ト		U,R,C		
※	NA 08 45 00	"		"		A,E		
	UA 25 31 80	Mylar Cap	1800P 50V	マ イ ラ ー コ ン	C507,508			
	UA 25 41 00	"	0.01μ50V	"	C509			

※New Parts (新規部品)

Ref. No.	Part No.	Description	部 品 名	Remarks	Common Model	Markets	ランク
	UA 25 41 50	Mylar Cap	0.015 μ 50V	マイラーコン	C505,506		
	UA 75 61 00	"	1 μ 63V	"	C5511,512		
	UJ 13 91 00	Electrolytic Cap	1000 μ F 18V	ケミコン	C513		
	UW 96 54 70	"	0.47 μ F 50V	"	C503		
	UW 96 61 00	"	1 μ F 50V	"	C504,510,514		
	UW 96 62 20	"	2.2 μ F 50V	"	C501,502		
	HL 32 61 00	Metal Oxide Resistor	1k Ω 2P	酸金抵抗	R583		
	HT 37 00 10	Semi Variable Resistor	81K	半固定VR	VR501,502	} Interchangeable	
	HT 77 00 30	"	"	"	"		
	HV 35 52 20	Flame Proof Resister		不燃化カーボン抵抗	R582		
	iA 10 15 70	Transistor	2SA1015 ϕ .Y	トランジスタ	TR507		
	iC 18 15 00	"	2SC1815	"	TR509		
	iD 12 73 00	"	2SD1405 Q.P	"	TR508	} Interchangeable	
	iD 14 05 00	"	2SD1405	"	"		
	iE 10 05 00	FET	2SK68A	F E T	TR501,502,505,506		
	iE 10 05 10	"	2SK68A K1,K2	"	TR503,504	} Interchangeable	
	iE 10 05 20	"	2SK68A L1,L2	"	"		
	iF 00 15 10	Zener Diode	HZ-6C1L	ツェナーダイオード	D504		△
	iF 00 18 40	"	RD3,0E62	"	D503		
	iF 00 20 80	"	HZ16-3L	"	D501,502		
	iF 00 77 10	LED	SLV-31VC5	L E D	D509~548		
	iF 00 81 70	"	SLV-31VC3H	"	D506~508		
	iG 03 06 00	IC	TA7612AP	I C	IC501~504		
	iG 03 07 00	"	TA7318P	"	IC506		
	iG 05 82 00	"	M5218L	"	IC505		
	iH 00 08 10	Diode Bridge	1B4B41	ダイオードブリッジ	D505		△
	KA 80 45 10	Push Switch	SF1201-4	ブッシュSW 4-2	SW501		
	KA 80 45 20	"	SF1202-03	ブッシュSW	SW502		
	KA 80 45 30	"	SF1201-2	ブッシュSW 2-2	SW503		
	KB 00 07 50	Fuse	T2.0A 250V	ヒューズ	F501	A,E	△
	KB 00 10 30	"	2.0A 250V	"	"	U,C,R	△
	LB 20 18 80	Fuse Holder Pin		ヒューズホルダーピン			
	CB 63 05 40	LED Refrector		LEDリフレクター			
	NA 08 45 80	Power Circuit Board		電源シート		E	
	NA 08 45 70	"		"		U	
	NA 08 45 90	"		"		R	
	NA 08 46 00	"		"		A	
	NA 08 48 80	"		"		C	

※New Parts (新規部品)

Ref. No.	Part No	Description	部 品 名	Remarks	Common Model	Markets	ランク
	FC 36 41 00	Mylar Cap	0.01 μ 50V	マイラーコン	C301~304		
	FC 36 44 70	"	0.047 μ 50V	"	C317~320		
	FU 35 12 20	FE Mica Cap	22P 500V	F E マイカコン	C315,316		
	FZ 00 06 70	MM Ceramic Cap	0.047 μ 400V	M M コ ン	C324,325,330,331	R,U,A,C	
	FZ 00 06 70	"	"	"	C322,323,328~329,332,333	E	
	UT 45 21 00	Polipropylene Film Cap	100P 100V(J)	ポリプロコン	C311,312		
*	UT 45 21 50	"	150P 100V(J)	"	C309,310,313,314		
	UT 45 44 70	"	0.047 μ 100V(J)	"	C335~338		
	UJ 16 81 00	Electrolytic Cap	100 μ F 50V	ケ ミ コ ン	C305~308		
	HV 45 32 20	Frame Proof Resister	2.2 Ω	不燃化カーボン抵抗	R309~316		
	HV 45 34 70	"	4.7 Ω	"	R335~338,343~346		
	HV 45 44 70	"	47 Ω	"	R317~320		
	HV 45 52 20	"	220 Ω	"	R339~342		
	HZ 00 38 30	Metal Plate Resister	0.1 Ω 2P	金 属 板 抵 抗	R301~308		
	iA 11 45 00	Transister	2SA1145 ϕ ,Y	ト ラ ン ジ ス タ	TR313,314		
	iC 27 05 00	"	2SC2705 ϕ ,Y	"	TR315,316		
*	iA 13 06 50	"	2SA1306B	"	TR309,310		
*	iC 32 98 50	"	2SC3298B	"	TR311,312		
	iH 00 02 40	Diode	1S1885	ダ イ オ ード	D311~318		
	iF 00 72 10	Zener Diode	MA1240-M	ツェナーダイオード	D319~322	} Interchangeable	
	iF 00 19 40	"	HZ24-2	"	"		
	iF 00 23 50	"	HZ12-B2	"	D307,308,309,310		
	iH 00 09 60	Diode	30DF1	ダ イ オ ード	D323~326	} Interchangeable	
	iH 00 13 50	"	S3K20	"	"		
	iH 00 13 60	"	RP4Z(LF-J4)	"	"		
	iH 00 11 30	Diode Bridge	D5FB20	ダイオードブリッジ	D302,304		Δ
	iH 00 11 30	"	"	"	D301,303	E,C	Δ
	iH 00 08 70	"	4D4B41	"	"	R,U,A	Δ
	KB 00 13 90	Fuse	250V 10A	ヒ ュ ー ズ	F301,302	R,U,C	Δ
	KB 00 07 90	"	250V T4.0A	"	"	A,E	Δ
	KB 00 14 90	"	250V 10A	"	F303	R	Δ
	KB 00 17 60	"	250V T6.3A	"	F304~307	E	Δ
	KB 00 15 20	"	125V 7A	"	"	U,C	Δ
	LB 20 18 80	Fuse Holder Pin		ヒューズホルダーピン			
	BB 07 04 40	Bus Bar		バ ス バ ー			

*New Parts (新規部品)

A

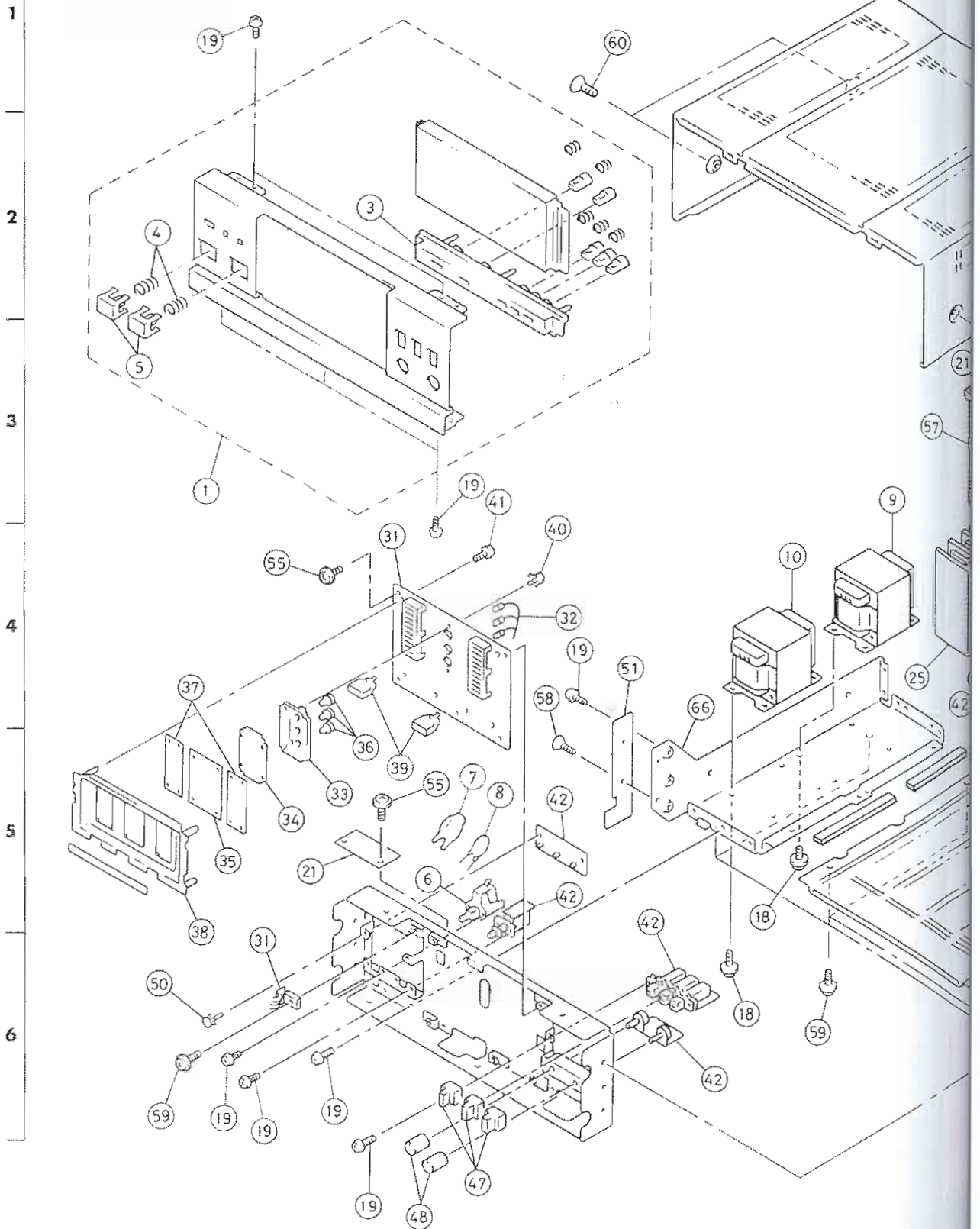
B

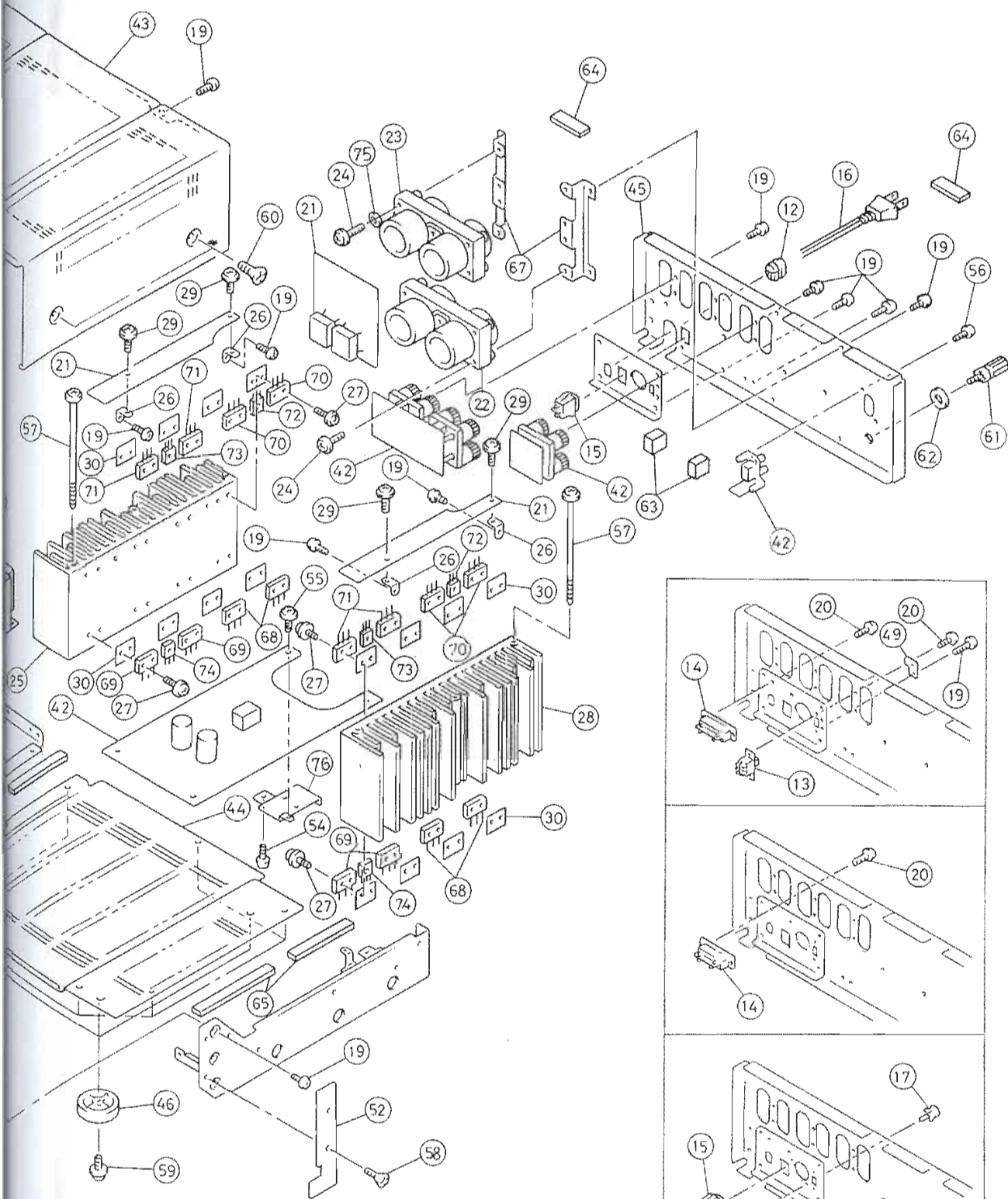
C

D

M-80

EXPLODE VIEW ~ MECHANISM CHASSIS UNIT (All over)





■PARTS LIST~MECHANISM CHASSIS UNIT(All over)

Ref. No.	Part No.	Description	部 品 名	Remarks	Common Model	Markets	ランク
※	1	NB 62:04 80	Panel Unit	パネルユニット			
※	3	NB 62 03 80	Sub Panel	サブパネル			
※	4	AA 62 20 80	Spring	スプリング			
※	5	CB 63 03 50	Push Button	プッシュボタン			
※	6	KA 80 25 50	Push Switch	プッシュスイッチ		R,U,A,E	
※	"	KA 80 47 60	"	"		C	
※	7	CB 09:52 60	Cover	コンデンサカバー	丸形		
※	8	Fi 38:41 00	Ceramic Cap	セラコン			
※	9	GA 67:78 20	Power Transformer	電源トランス		U	△
※	"	GA 67:80 20	"	"		C	△
※	"	GA 67:82 10	"	"		A,E	△
※	"	GA 67:86 20	"	"		R	△
※	10	GA 67:79 20	"	"		U	△
※	"	GA 67 81 20	"	"		C	△
※	"	GA 67 83 10	"	"		A,E	△
※	"	GA 67 87 20	"	"		R	△
※	11	LB 20 14 80	Voltage Selector	電圧切換器			
※	12	CB 07 27 50	Cord Stopper	コードストッパー		U,E,C	
※	"	CB 62 01 90	"	"		R,A	
※	13	KA 40:13 30	Slide Switch	スライドスイッチ	Voltage Selector	E	
※	14	LA 00 29 50	2P Relay Terminal	2 P 中継端子台		A,E	
※	15	LB 20 18 10	AC Outlet	ACアウトレット	単連	R,U,C	△
※	16	MG 00:09 10	Power Cord	電源コード		E	△
※	"	MG 00:09 20	"	2.5m 7.5A 250V		A	△
※	"	MG 00:14 90	"	"	Inter changeable	A	△
※	"	MG 00:13 60	"	2m 13A 125V		U,C	△
※	"	MG 00:16 30	"	2m 6A 250V		R	△
※	17	CB 06:88 80	Plastic Rivet	プラスチックリベット		R	
※	18	AA 60:38 50	Fixing Screw	段付きネジ			
※	19	ED 33:00 86	Binding Head Screw	3×8 FCM3-B \dagger	鉄ボンディングネジ	Bタイト	
※	20	ED 33:00 66	"	3×6 FCM3-B \dagger	鉄バインド小ネジ		A,E
※	21	NA 08:45 70	Power Circuit Board	電源シート		U	
※	"	NA 08 45 80	"	"		E	
※	"	NA 08 45 90	"	"		R	
※	"	NA 08:46 00	"	"		A	
※	"	NA 08 48 80	"	"		C	
※	22	FZ 00:60 10	Electrolytic Cap Set	47000 μ F/45V	ケミコンセット	C345,346	
※	23	FZ 00:60 20	"	33000 μ F/56V	"	C343,344	
※	24	Ei 33:02 06	Binding Head Screw	3×20 FCM3-B \dagger	バインドタッピングネジ	Bタイト	
※	25	BA 09:02 40	Heat Sink	放熱板	Left	A,E,R	
※	28	BA 09:00 40	"	"	Right	A,E,R	
※	25	BA 09 05 80	"	"	Left	U,C	
※	28	BA 09 05 90	"	"	Right	U,C	
※	26	AA 62 20 60	Stay	TRPCB	ステー		
※	27	EZ 00:13 50	Cup Screw	ϕ 8 3×14 FCM3-B \dagger	鉄カップスクリュー	Bタイト	
※	29	EK 33:60 10	BW Head Screw	3×8 FCM3-B \dagger	鉄BWヘッドタッピングネジ		
※	30	iL 00:06 00	Mica Base	MT-200	マイカベース		
※	31	NA 08:44 90	Meter Circuit Board	メーターシート		R,U,C	
※	"	NA 08 45 00	"	"		A,E	
※	32	JB 00:11 00	Pilot Lamp	BV 150mA	パイロットランプ		
※	33	CB 63:05 30	Lamp Reflector	ランプリフレクター			
※	34	CB 63:05 50	Diffusing Plate	ディフュージングプレート			

※New Parts (新規部品)

Ref. No.	Part No.	Description	部 品 名	Remarks	Common Model	Markets	ランク
※ 35	CB 63:03:20	Meter Sheet	メーターシート				
※ 36	CB 63:07:50	Lamp Cap	ランプキャップ				
※ 37	CB 63:03:40	Diffusing Film	ディフュージングフィルム				
※ 38	CB 63:02:90	Meter COver	メーターカバー				
※ 39	CB 63:03:90	Reflector	リフレクター				
40	CB:06:88:80	Plastic Rivet	プラスチックリベット				
41	ED 33:01:08	Binding Head Screw	3×10 FCM3-B ϵ	鉄バインドネジ	Pタイト		
※ 42	NA 08:46:10	Main Circuit Board	メインシート			R,U,A,C	
※ "	NA 08:49:50	"	"				
※ 43	AA 62:19:80	Top Cover	トップカバー				
※ 44	AA 62:20:30	Bottom Cover	ボトムカバー				
※ 45	AA 62:22:90	Rear Panel	リヤパネル			R	
※ "	AA 62:23:00	"	"			U,C	
※ "	AA 62:23:10	"	"			A	
※ "	AA 62:23:20	"	"			E	
※ 46	NB:62:03:20	Leg Ass'y	脚				
※ 47	NB 62:04:60	Button Ass'y	ボタンASS'Y				
48	BA 08:58:70	Knob	ツマミ				
49	CB 60:14:40	VS Stopper	V S ストップバー			E	
50	CB:06:88:80	Plastic Rivet	プラスチックリベット				
※ 51	CB 63:03:70	Side Plate	サイドプレート	Left			
※ 52	CB 63:03:80	"	"	Right			
55	EK 36:50:80	BW Head Screw	3×8 FCM3-B ϵ	BWヘッドタッピンネジ			
57	EX 60:00:30	"	4×132 FCM3-B ϵ	BWヘッド小ネジ	トガリ先		
58	EB 04:01:06	Flat Head Screw	4×10 FCM3-B ϵ	皿ネジ	Sタイト		
59	EK 33:00:30	BW Head Screw	3×10 FCM3-B ϵ	BWヘッドタッピンネジ			
60	AX 60:01:50	Screw	4×8 FCM3-B ϵ	化粧ネジ	Sタイト		
61	EZ 00:14:00	Ground Terminal Screw	3×13.5 MFNI-V	アース端子ネジ			
62	EV 90:13:60	Flat Washer Sems Type	ϕ 10 ϕ 3.6 t0.8 FNH3	鉄セムス平座金			
76	AA 62:20:40	Stay Heat Sink	ヒートシンクステー				
63	CB 63:07:60	Dumper (M)	ダンパー				
64	CB 60:13:40	Spacer	スペーサー				
65	CB 63:07:80	Dumper	ダンパー				
	CB 62:20:60	Anti-Vibration Tape	ボウシんテープ				
66	AA 62:33:30	Side Frame (L)	サイドフレーム (L)				
67	AA 62:20:70	Stay, Electrolytic Cap	ケミコンステー				
※ 68	iA 11:69:00	Transistor	2SA1169	トランジスタ	TR135~138		△
※ 69	iC 27:73:00	"	2SC2773	"	TR131~134		△
※ 70	iX 60:32:60	"	2SA1216	"	TR305~308	Interchangeable	△
※ 71	iX 60:32:70	"	2SC2922	"	TR301~304		△
※ 70	iA 11:69:00	"	2SA1169	"	TR305~308		△
※ 71	iC 27:73:00	"	2SC2773	"	TR301~304		△
72	iA 13:06:50	"	2SA1306B	"	TR125,126		△
73	iC 32:98:50	"	2SC3298B	"	TR119,120		△
74	iC 19:53:50	"	2SC1953	"	TR115,116		△
75	EV 20:20:36	WASHER	ワッシャー				

※New Parts (新規部品)